

VC 10T SH 50 Vinç 10 Ton Double Crane Pro

Precision and Power for Every Lift



www.dinkymetal.com



+90 531 293 11 38



info@dinkymetal.com

Table of content

Introduction	1
Technical specifications	
<i>General dimensions</i>	2
<i>Types of crane systems</i>	3
Material	
<i>C1050 Steel drum</i>	4
<i>AISI C45 Steel wheels</i>	5
<i>S355JR Steel bridge</i>	6
Key component	
<i>SKF 6209-C-2Z Bearing</i>	7
<i>Engine & Gearbox</i>	8
<i>RRL Load cell</i>	9
Electrical components	
<i>Inverter & Contactor</i>	10
Spare parts	11
<i>Spare parts</i>	12
Company informations	

Introduction



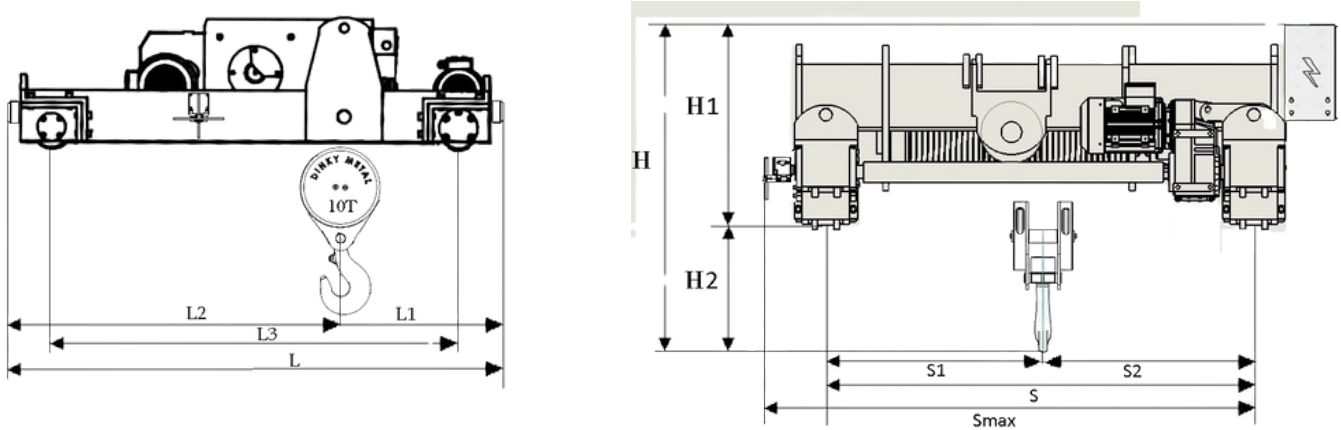
DINKY METAL

Double girder overhead travelling cranes are ideal solutions with high lifting capacity and designed for heavy working conditions. These cranes are widely used in industrial production facilities. Based on the principle of travelling on two main girders, double girder overhead travelling cranes are capable of lifting higher weights and are generally used in places with long wheelbase. These cranes are preferred in many areas from the maritime transport sector to the construction and mining sector

The maximum lifting capacity must be written in a visible place on the crane. The heaviest loads that automatic mobile cranes can lift inside or outside the cabin must be mentioned. In jib cranes, the heaviest loads allowed according to the slope and arrow distance must be clearly shown. In case of overload, there should be an automatic warning device with sound and light. Rods and beams must be manufactured according to the maximum load. Rope guides should be used to ensure that the ropes are properly wound on the drum

10 ton

General dimensions



CAPACITY (TON)	TIP/TYPE	S (mm)	S1 (mm)	S2 (mm)	S MAX (mm)	L (mm)	L1 (mm)	L2 (mm)	L3 (mm)	H (mm)	H1 (mm)	H2 (mm)	H MIN (mm)	WEIGHT (kg)
1	VC1TSH50	1000	390	610	1525	1110	455	655	815	990	570	420	330	300
2	VC2TSH50	1000	335	665	1525	1110	455	655	815	990	570	420	400	335
3,2	VC3TSH50	1100	325	775	1625	1300	450	850	1015	1180	570	610	395	425
5	VC5TSH50	1300	450	850	1825	1450	505	945	1165	1410	570	990	445	515
6,3	VC6TSH50	1300	450	850	1825	1450	505	945	1165	1210	570	640	445	550
7,5	VC7TSH50	1300	485	815	1825	1510	505	1005	1215	1280	580	700	470	680
8	VC7TSH50	1300	485	815	1825	1510	505	1005	1215	1280	580	700	470	680
10	VC10TSH50	1400	440	960	1940	1600	425	1175	1290	1380	600	780	525	815
12	VC12TSH50	1400	440	960	1940	1600	425	1175	1290	1380	600	780	525	815
16	VC16TSH50	1400	440	960	1940	1860	655	1205	1545	1560	700	860	530	1100
20	VC20TSH50	1500	555	945	2040	1950	725	1225	1580	1740	720	1020	615	1360
25	VC25TSH50	1600	495	1105	2175	2100	745	1355	1620	1890	750	1140	655	1645
32	VC30TSH50	1700	530	1170	2300	2330	850	1480	1800	2075	875	1200	725	2245
40	VC40TSH50	1900	685	1215	2550	2635	1115	1520	2105	2190	850	1340	750	2950
50	VC50TSH50	2150	750	1400	2950	2740	1170	1570	2090	2715	1315	1400	965	3100

Types of crane systems

KAPASİTE (TON) CAPACITY (TON)	TİP TYPE	YÜKSEKLİK (M) LIFTING HEIGHT	KALDIRMA / LIFTING							YÜRÜTME / TRAVERSING			
			KALDIRMA HIZI (M/DK) LIFTING SPEED	KALDIRMA MOTORU (KW) LIFTING MOTOR	MOTOR DEVRİ MOTOR RPM	TAMBUR ÇAPı (MM) DRUM DIAMETER	DONANIM ROPE FALLS	HALAT ÇAPı (MM) ROPE DIAMETER	KANCA TİPİ HOOK TYPE	ARABA YÜRÜTME HIZI (M/DK) TRAVERSING SPEED	YÜRÜTME MOTORU (KW) TRAVERSING MOTOR	MOTOR DEVRİ MOTOR RPM	TEKER ÇAPı (MM) WHEEL DIAMETER
1	VC1TSH50	9-20	6	1,1	1440	160	1/2	8	Nr 1	16-25	0,25	1425	125
2	VC2TSH50	9-20	6-8	2,2	1145	160	1/2	10	Nr 1,6	16-25	0,25	1425	125
3,2	VC3TSH50	9-20	6-8	3	1440	220	1/2	12	Nr 1,6	16-25	0,37	1425	125
5	VC5TSH50	9-20	4-6	4	1450	220	1/4	12	Nr 2,5	16-25	0,55	1440	140
6,3	VC6TSH50	9-20	4-6	5,5	1450	220	1/4	12	Nr 2,5	16-25	0,75	1440	140
7,5	VC7TSH50	9-20	4-6	5,5	1455	275	1/4	12	Nr 4	16-25	0,75	1440	140
8	VC7TSH50	9-20	4-6	5,5	1455	275	1/4	12	Nr 4	16-25	0,75	1440	140
10	VC10TSH50	9-20	4-6	7,5	1460	275	1/4	14	Nr 6	16-25	1,1	1440	160
12	VC12TSH50	9-20	4-6	7,5	1460	275	1/4	14	Nr 6	16-25	1,1	1440	160
16	VC16TSH50	9-20	4-6	11	1470	325	1/4	16	Nr 8	16-25	1,5	1440	200
20	VC20TSH50	9-20	4-6	15	1470	325	1/4	18	Nr 12	16-25	2,2	1445	200
25	VC25TSH50	9-20	4-6	18,5	1475	325	1/4	20	Nr 12	16-25	2,2	1445	250
32	VC30TSH50	9-20	3-5	22	1475	325	1/4	22	Nr 20	16-25	3	1440	300
40	VC40TSH50	9-20	3-5	22	1475	400	1/6	22	Nr 25	16-25	2 x 2,2	1450	300
50	VC50TSH50	9-20	3-5	30	1475	400	1/6	24	Nr 32	16-25	2 x 3	1440	400

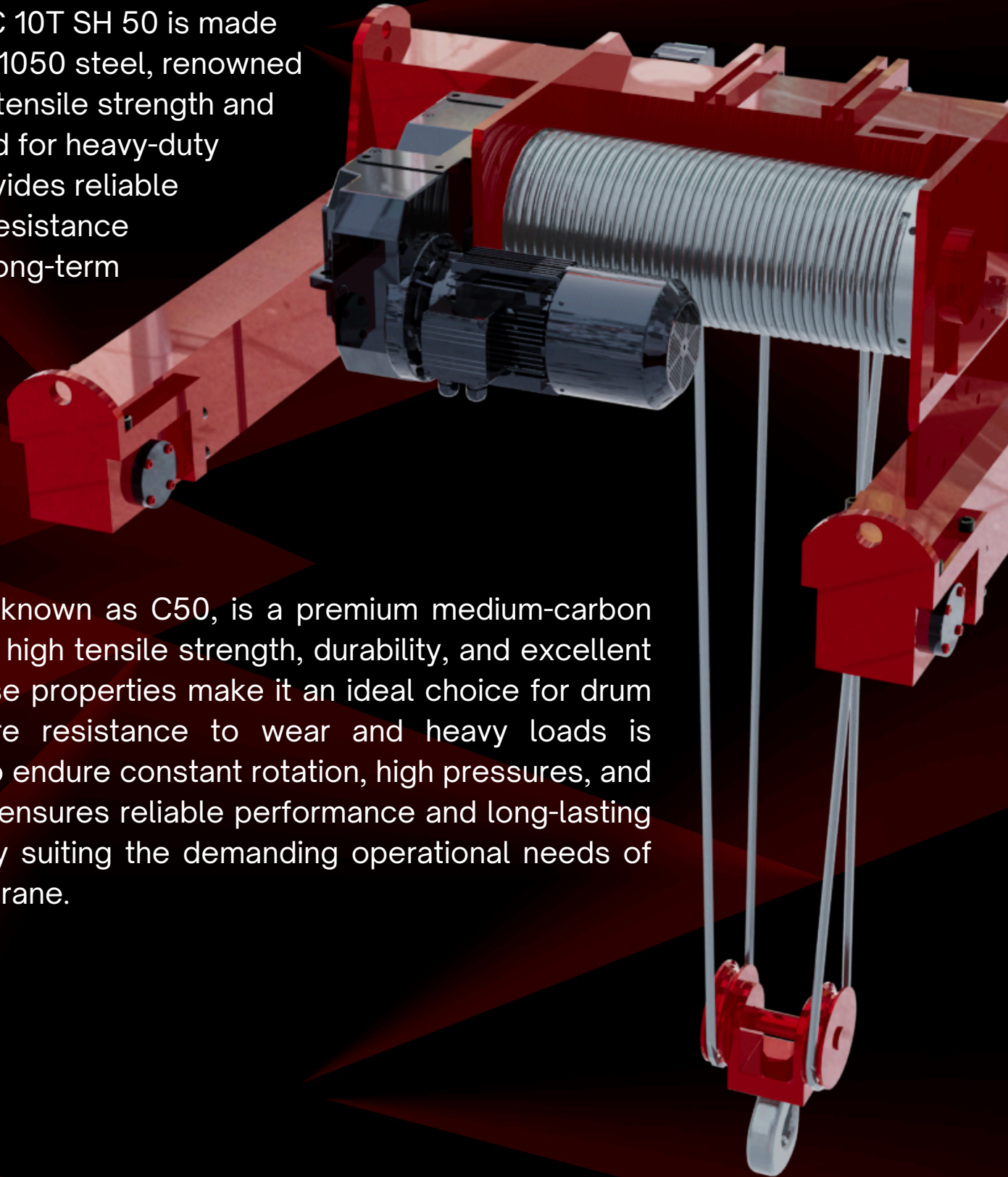
Note :

- Please ask for different speed or different working class.
- Wheel diameter refers to the wheel rolling diameter.
- Please ask for different lifting height.

C1050 Steel drum

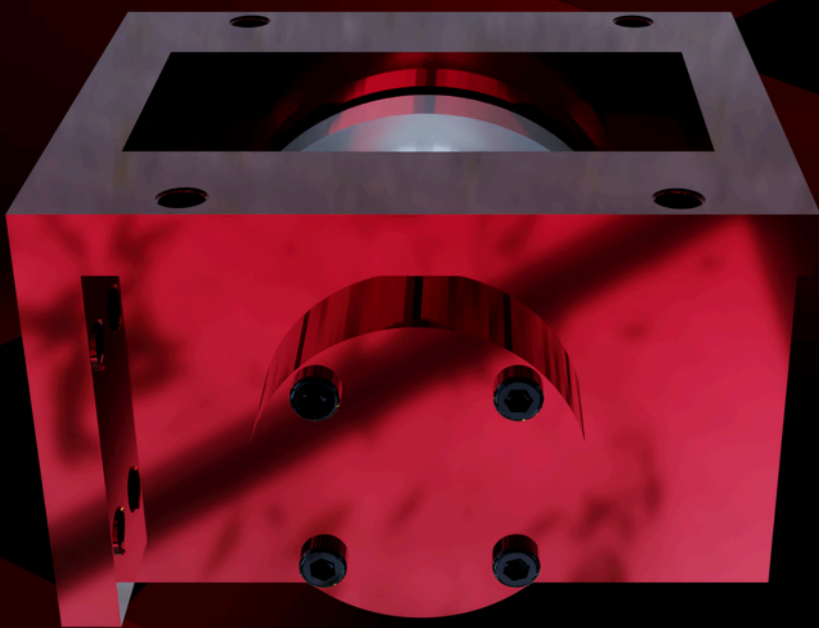
The drum of the VC 10T SH 50 is made from high-quality C1050 steel, renowned for its exceptional tensile strength and durability. Designed for heavy-duty applications, it provides reliable performance and resistance to wear, ensuring long-term efficiency.

C1050 steel, also known as C50, is a premium medium-carbon steel known for its high tensile strength, durability, and excellent machinability. These properties make it an ideal choice for drum applications, where resistance to wear and heavy loads is critical. Its ability to endure constant rotation, high pressures, and surface hardening ensures reliable performance and long-lasting durability, perfectly suiting the demanding operational needs of our double girder crane.



AISI C45 Steel wheels

The wheels of the VC 10T SH 50 are made from AISI C45 steel, a high-quality medium-carbon steel known for its strength and reliability in heavy-duty applications.



AISI C45 is the perfect choice for crane wheels due to its excellent wear resistance, high tensile strength, and ability to withstand heavy loads. Its machinability ensures precise manufacturing, while its surface hardening capability enhances durability against continuous rolling and abrasion. This makes it ideal for ensuring long-lasting, dependable performance in demanding crane operations.

S355JR Steel bridge



The bridge of the VC 10T SH 50 is made from S355JR Steel, ensuring exceptional durability and strength to support heavy loads in industrial environments.

Steel S355JR steel is used in the foundation and load-bearing elements of large structures such as bridges, skyscrapers, and stadiums. It is preferred for various structural components in industrial buildings, factory facilities, warehouse structures, and industrial plants.

Mechanical Properties of S355JR Steel

Tensile Strength: This refers to the maximum stress level that the steel material can withstand before breaking. The tensile strength of S355JR steel, ranging between 490-630 MPa, provides high durability and safety in various applications.

Elastic Modulus (Young's Modulus): This represents the material's resistance to elastic deformation. With an elastic modulus of approximately 210 GPa, it defines the steel's rigidity and resistance to deformation.

Impact Strength: The Charpy V-notch test evaluates how the material behaves under impact loads. In S355JR steel, a minimum impact strength of 27 Joules at room temperature demonstrates the material's resistance to impact and shock in structural applications.

SKF 6209-C-2Z Bearing



SKF 6209-C-2Z is a single-row deep groove ball bearing designed for high-speed applications. This bearing is known for having low friction and is optimized for low noise and low vibration, which enables high rotational speeds. It accommodate radial and axial loads in both directions, is easy to mount, and require less maintenance than many other bearing types.



- Simple, versatile and robust design
- Low friction
- High-speed capability
- Accommodate radial and axial loads in both directions
- Require little maintenance

Inner diameter	45 mm
Outer diameter	85 mm
Width	19 mm
Dynamic Load Capacity	35.1 kN
Static Load Capacity	21.6 kN
Speed Limit	11,000 r/min
Sealed on both sides with metal shield (2Z)2	

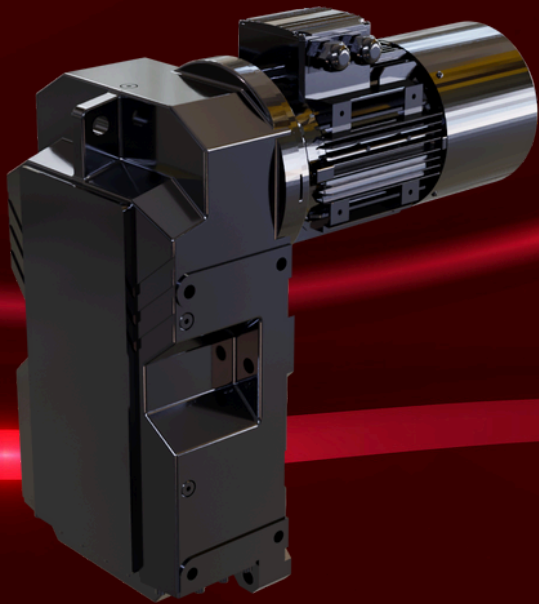
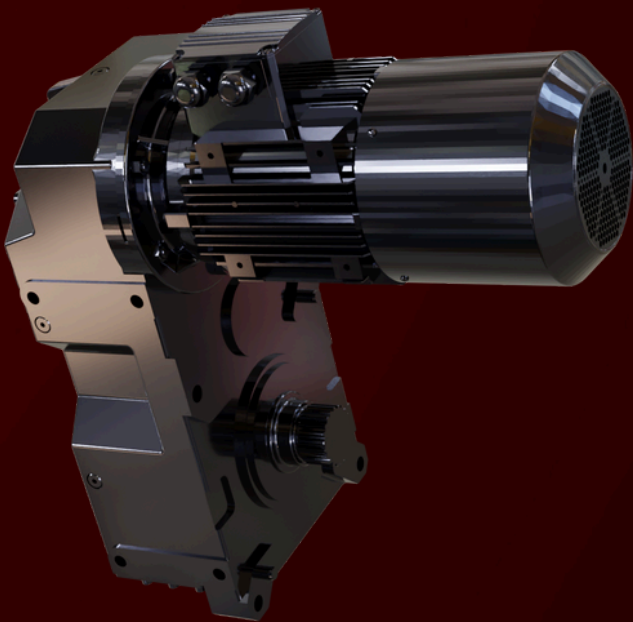
Engine & Gearbox



The Yilmaz Gearbox VE 673 1K 3E 160 M with 11 kW power is a **robust and efficient** gearbox designed for industrial applications.

Here are some key details:

- Power: 11 kW
- Input Speed: 3,000 RPM
- Output Speed: 1,600 RPM
- Ratio: 3:1
- Torque: Suitable for high torque applications



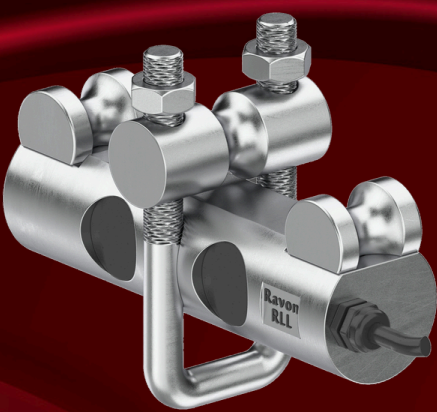
This gearbox is known for its durability and efficiency, making it ideal for heavy-duty machinery and equipment.

Lifting speed	9,4 m/min
Power moteur	15 kw
Out put speed abtriebs	22 n2 (r.p.m)
Output torque abtriebs	6120 m2 Mn)
Ratio	66,59 i
Per.o.loads	110450 F/N
Weight	379 kg
Drum diameter	320mm

RRL Load cell

Ravon

The Ravon RLL is a reliable rope clamp tension load cell that measures weights from 1 to 10 tons. Designed for easy installation with wire rope diameters of 8-36 mm, it effectively measures weight in the crane and hoist industry, enabling safe load monitoring.



Material	Steel
Load Limiting Accuracy	$\pm 1\%$
Protection Raiting	IP66
Safe Overload	$\%150\text{ FS}$
Ultimate Overload	$\%300\text{ FS}$
Cable	$4\times 0,22\text{ mm}^2$
Cable Length	2 meters
Compensated Temperature Range	$-10\sim +40\text{ }^{\circ}\text{C}$ (optional)
Operating Temperature Range	$-30\sim +70$
Rated Output	$1.2\pm 0.5\text{ mV/V}$
Recommended Excitation	3-15V
Input Resistance	$370\pm 30\text{ }\Omega$
Output Resistance	$352\pm 5\text{ }\Omega$
Zero Balance	$\pm 2\%$
Insulation Resistance	$\leq 5000\text{ M}\Omega$

Inverter & Contactor



The Altivar inverter ATV340D15N4E ensures precise, reliable, and efficient performance in demanding applications.

Key Features:

- **Power:** Supports 15 kW (20 hp) at 380-480 V AC, 3-phase.
- **Advanced Control:** Synchronous/asynchronous motors with vector control.
- **Fast and Connected:** 1 ms response time with Ethernet Modbus TCP/IP and EtherNet/IP.
- **Built Tough:** Works up to 60°C, IEC/EN 61800-5-1 standards.
- **Safety First:** Safe Torque Off (STO) for secure operation.



The TeSys Deca LC1D098B7 is a reliable 4-pole contactor (2 NO + 2 NC) designed for non-inductive loads up to 20 A.

Key Features:

- **Load Capacity:** Up to 20 A at 690 V AC-1
- **Coil Voltage:** Equipped with a 24 V AC 50/60 Hz coil
- **Connection:** Features screw clamp terminals
- **Durable Design:** Complies with international standards, ensuring safety and reliability in heavy-duty use.

Spare parts

To ensure the optimal performance and longevity of our CV 10T SH 50 crane we provide a comprehensive range of high-quality spare parts. Our spare parts guarantee seamless compatibility, durability, and reliability, minimizing downtime and maximizing efficiency for your operations.



Cable trolley



Rope trolley



Rope socket



Standar ropes

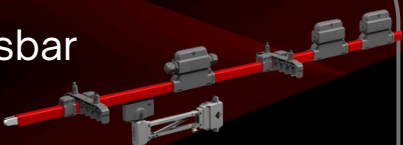
Load cell



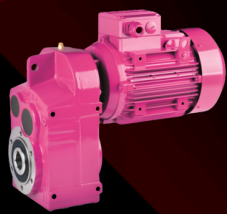
Crane hook



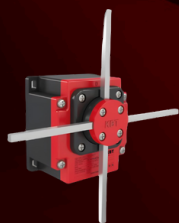
Uni-rail conductor busbar



Spare parts



Travelling gearbox

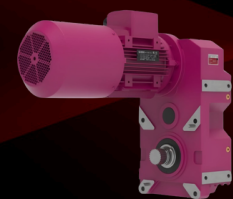


Limit switch



Drum

Gearbox

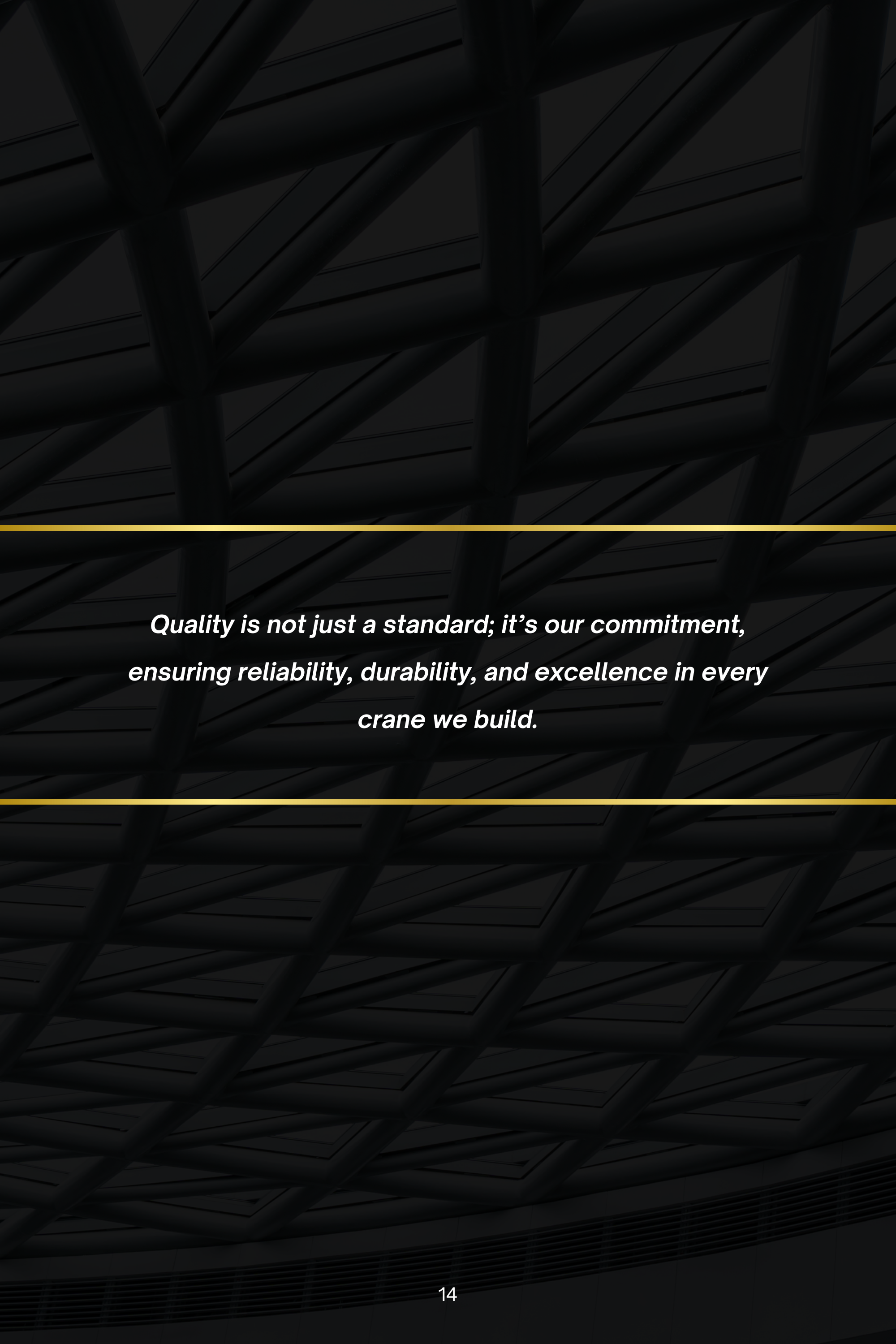


Rotray limit switches



Load display



The background of the entire page is a dark, monochromatic photograph of a crane's internal lattice structure. The perspective is looking upwards, showing a complex network of diagonal and horizontal beams that create a strong sense of depth and geometric pattern. The lighting is dramatic, with some beams catching more light than others, creating a play of light and shadow.

*Quality is not just a standard; it's our commitment,
ensuring reliability, durability, and excellence in every
crane we build.*



Our branches and warehouses are strategically located across Turkey to serve our customers efficiently. Here are our locations:"

- **Kahramanmaraş:** Onikişubat, Gayberli Mah. 28045 Sk. No: 58
- **Eskişehir:** Odunpazarı, İstiklal Mah. Reşadiye Esnafı Sk. No: 44/2
- **Gaziantep:** Nurdağı, Yeni Mah. 1007 Sok. No: 8
- **Osmaniye:** Merkez, Mevlana Mah. 17053 Sok. No: 21, Oduncular Site

Contact



www.dinkymetal.com



+90 531 293 11 38



hasan@dinkyexports.com

info@dinkymetal.com

europa@dinkymetal.com

agent.international@dinkymetal.com